

Public Document Pack

Supplementary Information for West (Outer) Area Committee – 9th September 2011

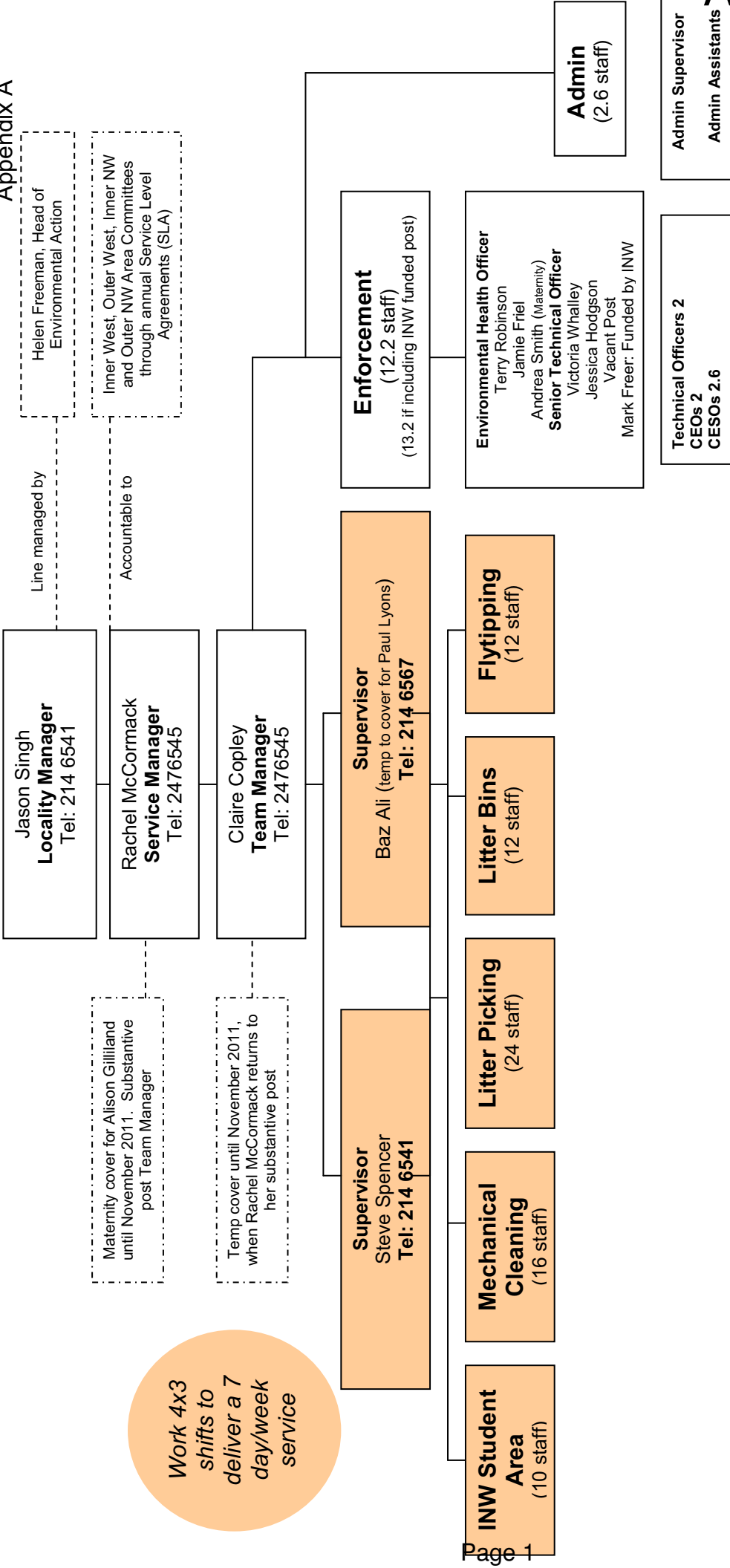
Agenda item 8 – Appendices to Environmental Services Service Level Agreement:

- Appendix A
- Appendix B
- Key to Appendix C
- Appendix D
- Appendix G

This page is intentionally left blank

Environmental Services - West North West Locality Team

Appendix A



Maternity cover for Alison Gilliland until November 2011. Substantive post Team Manager

Temp cover until November 2011, when Rachel McCormack returns to her substantive post

Work 4x3 shifts to deliver a 7 day/week service

Environmental Action Services – Managers & Supervisors

WNW Locality Team (Henshaw / Pudsey Town Hall)



Jason Singh
Locality Manager
214 6541



Rachel McCormack
Service Manager
247 6545



Claire Copley
Team Manager
247 6545



Steve Spencer
Supervisor
214 6541



Shabaj 'Baz' Ali
Supervisor (temporary)
214 6567

Appendix B - LITTER BINS CAPITAL BUDGET - ALLOCATION OF BUDGETS

	Capital Programme £000	Actual Spend to 31.3.11 £000	Balance Available £000	Budget 11/12 £000	Budget 12/13 £000
CAPITAL SCHEME (12594 LIT)					
Litter Bins Replacement	300.0	122.7	177.3	100.0	77.3

Current Number of Bins per Area	
City Centre	388
WNW	1,248
ENE	684
SSE	775
	3,095

Capital Allocation	
	£
City Centre	12,536
WNW	40,323
ENE	22,100
SSE	25,040
	100,000
	77,300

This Capital Scheme is funded by prudential borrowing. The financing of which is budgeted for in revenue. The revenue budget repayments reflect the level of capital spend. If capital spend less than budget, a saving will be made in revenue in that year.

However, as capital underspends can be carried forward, and if the whole budget is spent in the following year then this could lead to an overspend in revenue in the subsequent year.

This page is intentionally left blank

WNW Locality Team - Draft Budget for 2011/12

Appendix B

Budget Heading	£	What this pays for	What is NOT included:
Staff Functions			
Management & Support	221,350	Locality Manager, Service and Team Managers and Admin Support	There are a number of elements of the overall delegation that will continue to be managed and budgeted for at a city level. These are:
Supervisors	67,160	2 Supervisors working shifts to cover the 7 day/wk service	Dog Warden Service
Bulk/Fly tipping team	155,580	4 drivers and 4 street attendants working shifts to deliver a 7 day/wk service	Graffiti team
Pathsweepers	220,830	10 drivers working shifts to deliver a 7 day/wk service	Weedspraying
Roadsweepers	89,040	4 drivers working shifts to deliver a 7 day/wk service	Disposal cost of street waste
Litter bins emptying	158,480	4 drivers and 4 street attendants working shifts to deliver a 7 day/wk service	Past pension costs
Street Litter	434,680	24 street attendants working shifts to deliver a 7 day/wk service	
Headingley cleansing	202,800	6 drivers and 4 street attendants working shifts to deliver a 7 day/wk service	
Environmental Health & Technical	214,600	6 environmental health and technical staff	
Community Enforcement Staff	173,760	7 community enforcement staff	
Overtime	143,780	} operational cover	
Supply (Agency)	12,300		
Insurance, training & travel	6,930		
	2,101,290		
Premises Costs	10,000	Incl. £10k Works in default (recovered by income)	
Supplies and Services	127,620	Operational materials/equipment	Planned to be delegation
Fleet & Transport Costs			Master Key Fuel £286k (further work)
Fleet Hire	103,190	Contract hire of 5 x pathsweepers	FPN income (£84k) (change in current system / ICT)
Leasing costs	30,290	} Running costs for 2x Road Sweepers, 2x Caged tipper, 4x Tipper, 1x operational van	Managers vans £125k
Maintenance/repairs	99,370		Water (Standpipe charges) £70k
Fuel	59,170		
Vehicle insurance	14,660		
Staff travel	33,370		
	340,050		
Legal Costs	25,800	Cost of prosecutions and advice	Risks
			Fuel - ongoing inflation pressures
TOTAL EXPENDITURE	2,604,760		Attendance management
INCOME	- 32,380	Ad hoc cleansing, Court Costs and recovery of 'Works in Default'	TOIL
NET BUDGET	2,572,380		Agency usage
			Fleet - replacement costs

This page is intentionally left blank

West North West

Area Committee	Route Ref:	Area/Coverage	Frequency
Outer West *0.5 route in area	W12E*	Upper Wortley	Weekly
	F12D	Lower Wortley	
	F12E	Upper Wortley, Green Hill	3 weekly
	F12F	New Farnley, Upper Moor Side	
	F12G	Farnley	
	F12H	Silver Royd Hill, Farnley north	
	F13E*	Gamble Hill	
	F28A	Swinnow Moor	
	F28B	Pudsey north, Swinnow	
	F28C	Pudsey	
	F28D	Tannery Yard, Hough Side, Crimbles	
	M13A*	Rodley	
	M28A	Farsley	
	M28B	Calverley	
	M28C	Farsley, Bagley	
	M28D	Tyersal, Peckover Drive	
	M28E	Woodhall, Hillfoot, Delph End	
	M28F	Pudsey west, Queen's Park	
	M28G	Littlemoor Bottom, Fulneck	
	M28H	Crimbles, Troydale	
	M28J	Woodhall Hills	
	XM*	Tyersal/Howley Park Trading Estate (Morley)/Farnley	12 weekly

Key to Appendix C

This page is intentionally left blank

East North-East Locality - 14 Week Mechanical Sweeping Block Schedule

Updated 15.08.11

Code W = Weekly F = 3 weekly M = 6 weekly X* = 12 weekly *(sweep on alternate cycle)

Colour Code **ENE Block** **SSE Block** **WNW Block**

WEEK ONE														
	Monday		Tuesday		Wednesday		Thursday		Friday		Saturday		Sunday	
	S KING	RSC	S KING	RSC	S KING	RSC	S KING	RSC	S KING	RSC	S KING	RSC	S KING	RSC
SK8	RSC4	W11B1	W11F1	W11F1	W27B1	W27B1	F10C1	F10C1	F12J1	F12J1	W26A1	W26A1	CP	CP
SK9	SSE	W11C1	W11G1	W11G1	Recovery Day	Recovery Day	F10D1	F10D1	F13A1	F13A1	Recovery Day	Recovery Day	CP	CP
SK10	RSC5	W12A1	W12C1	W12C1	W12E1	W12E1	W13B1	W13B1	F12C1	F12C1	CP	CP	F28A1	F28A1
SK11	WNW	W12B1	W12D1	W12D1	W13A1	W13A1	W13C1	W13C1	F12D1	F12D1	CP	CP	F28B1	F28B1
SK12		HEA 1	HEA 2	HEA 2	HEA 3	HEA 3	HEA 4	HEA 4	HEA 5	HEA 5	HEA 6	HEA 6	HEA 7	HEA 7
SK13	RSC6	W2A1	W4A1	W4A1	W6A1	W6A1	W7A1	W7A1	F21C1	F21C1	M16A1	M16A1	CP	CP
SK14	WNW	W3A1	W4B1	W4B1	W6B1	W6B1	F35A1	F35A1	M21A1	M21A1	M16B1	M16B1	CP	CP

WEEK TWO														
	Monday		Tuesday		Wednesday		Thursday		Friday		Saturday		Sunday	
	S KING	RSC	S KING	RSC	S KING	RSC	S KING	RSC	S KING	RSC	S KING	RSC	S KING	RSC
SK8	RSC4	FW3A1	W11B2	W11B2	W11F2	W11F2	W27B2	W27B2	F10G1	F10G1	F13B1	F13B1	CP	CP
SK9	SSE	Recovery Day	W11C2	W11C2	W11G2	W11G2	MW3A1	MW3A1	F11C1	F11C1	F13C1	F13C1	CP	CP
SK10	RSC5	M13A1	W12A2	W12A2	W12C2	W12C2	W12E2	W12E2	W13B2	W13B2	CP	CP	F12E1	F12E1
SK11	WNW	M28A1	W12B2	W12B2	W12D2	W12D2	W13A2	W13A2	W13C2	W13C2	CP	CP	F12F1	F12F1
SK12		HEA 1	HEA 2	HEA 2	HEA 3	HEA 3	HEA 4	HEA 4	HEA 5	HEA 5	HEA 6	HEA 6	HEA 7	HEA 7
SK13	RSC6	M19D1	W2A2	W2A2	W4A2	W4A2	W6A2	W6A2	W7A2	W7A2	M16C1	M16C1	CP	CP
SK14	WNW	M19E1	W3A2	W3A2	W4B2	W4B2	W6B2	W6B2	F35B1	F35B1	M16D1	M16D1	CP	CP

WEEK THREE														
	Monday		Tuesday		Wednesday		Thursday		Friday		Saturday		Sunday	
	S KING	RSC	S KING	RSC	S KING	RSC	S KING	RSC	S KING	RSC	S KING	RSC	S KING	RSC
SK10	RSC5	F28C1	Recovery Day	Recovery Day	W12A1	W12A1	W12C1	W12C1	W12E1	W12E1	CP	CP	W13B1	W13B1
SK11	WNW	F28D1	Recovery Day	Recovery Day	W12B1	W12B1	W12D1	W12D1	W13A1	W13A1	CP	CP	W13C1	W13C1
SK12		HEA 1	HEA 2	HEA 2	HEA 3	HEA 3	HEA 4	HEA 4	HEA 5	HEA 5	HEA 6	HEA 6	HEA 7	HEA 7
SK13	RSC6	M16E1	M19F1	M19F1	W2A1	W2A1	W4A1	W4A1	W6A1	W6A1	W7A1	W7A1	CP	CP
SK14	WNW	M16F1	M20A1	M20A1	W3A1	W3A1	W4B1	W4B1	W6B1	W6B1	F6A1	F6A1	CP	CP

East North-East Locality - 14 Week Mechanical Sweeping Block Schedule

Updated 15.08.11

Code W = Weekly F = 3 weekly M = 6 weekly X* = 12 weekly *(sweep on alternate cycle)

Colour Code **ENE Block** **SSE Block** **WNW Block**

WEEK FOUR														
	Monday		Tuesday		Wednesday		Thursday		Friday		Saturday		Sunday	
	S KING	RSC	S KING	RSC	S KING	RSC	S KING	RSC	S KING	RSC	S KING	RSC	S KING	RSC
SK8	RSC4	F13D1	W26A1	W26A1	M27B1	M27B1	W11B2	W11B2	W11F2	W11F2	W27B2	W27B2	S KING	RSC
SK9	SSE	F13E1	M26E1	M26E1	M27C1	M27C1	W11C2	W11C2	W11G2	W11G2	MW3F1	MW3F1	CP	CP
SK10	RSC5	F12G1	M28D1	M28D1	M28B1	M28B1	W12A2	W12A2	W12C2	W12C2	CP	CP	W12E2	W12E2
SK11	WNW	F12H1	M28E1	M28E1	M28C1	M28C1	W12B2	W12B2	W12D2	W12D2	CP	CP	W13A2	W13A2
SK12		HEA 1	HEA 2	HEA 2	HEA 3	HEA 3	HEA 4	HEA 4	HEA 5	HEA 5	HEA 6	HEA 6	HEA 7	HEA 7
SK13	RSC6	M16G1	M16J1	M16J1	M20B1	M20B1	W2A2	W2A2	W4A2	W4A2	W6A2	W6A2	CP	CP
SK14	WNW	M16H1	M16K1	M16K1	M20C1	M20C1	W3A2	W3A2	W4B2	W4B2	W6B2	W6B2	CP	CP

WEEK FIVE														
	Monday		Tuesday		Wednesday		Thursday		Friday		Saturday		Sunday	
	S KING	RSC	S KING	RSC	S KING	RSC	S KING	RSC	S KING	RSC	S KING	RSC	S KING	RSC
SK8	RSC4	F10C2	F12J2	F12J2	W26A2	W26A2	FW3A2	FW3A2	W11B1	W11B1	W11F1	W11F1	CP	CP
SK9	SSE	F10D2	F13A2	F13A2	M26B1	M26B1	Recovery Day	Recovery Day	W11C1	W11C1	W11G1	W11G1	CP	CP
SK10	RSC5	W13B2	F12C2	F12C2	F28A2	F28A2	XF	XF	W12A1	W12A1	CP	CP	W12C1	W12C1
SK11	WNW	W13C2	F12D2	F12D2	F28B2	F28B2	XG	XG	W12B1	W12B1	CP	CP	W12D1	W12D1
SK12		HEA 1	HEA 2	HEA 2	HEA 3	HEA 3	HEA 4	HEA 4	HEA 5	HEA 5	HEA 6	HEA 6	HEA 7	HEA 7
SK13	RSC6	W7A2	F21C2	F21C2	M16L1	M16L1	M20D1	M20D1	W2A1	W2A1	W4A1	W4A1	CP	CP
SK14	WNW	F35A2	M21A1	M21A1	M16M1	M16M1	M21B1	M21B1	W3A1	W3A1	W4B1	W4B1	CP	CP

WEEK SIX														
	Monday		Tuesday		Wednesday		Thursday		Friday		Saturday		Sunday	
	S KING	RSC	S KING	RSC	S KING	RSC	S KING	RSC	S KING	RSC	S KING	RSC	S KING	RSC
SK8	RSC4	W27B1	F10G2	F10G2	F13B2	F13B2	W26A1	W26A1	M27F1	M27F1	W11B2	W11B2	CP	CP
SK9	SSE	M27B1	F10B2	F10B2	F13C2	F13C2	M26F1	M26F1	M27G1	M27G1	W11C2	W11C2	CP	CP
SK10	RSC5	W12E1	W13B1	W13B1	F12E2	F12E2	F28C2	F28C2	M28H1	M28H1	CP	CP	W12A2	W12A2
SK11	WNW	W13A1	W13C1	W13C1	F12F2	F12F2	F28D2	F28D2	M28J1	M28J1	CP	CP	W12B2	W12B2
SK12		HEA 1	HEA 2	HEA 2	HEA 3	HEA 3	HEA 4	HEA 4	HEA 5	HEA 5	HEA 6	HEA 6	HEA 7	HEA 7
SK13	RSC6	W6A1	W7A1	W7A1	M18A1	M18A1	M18C1	M18C1	M21C1	M21C1	W2A2	W2A2	CP	CP
SK14	WNW	W6B1	F35B2	F35B2	M18B1	M18B1	M18D1	M18D1	Recovery Day	Recovery Day	W3A2	W3A2	CP	CP

East North-East Locality - 14 Week Mechanical Sweeping Block Schedule

Updated 15.08.11

Code W = Weekly F = 3 weekly M = 6 weekly X* = 12 weekly *(sweep on alternate cycle)

Colour Code **ENE Block** **SSE Block** **WNW Block**

WEEK Seven														
	Monday		Tuesday		Wednesday		Thursday		Friday		Saturday		Sunday	
	S KING	RSC	S KING	RSC	S KING	RSC	S KING	RSC	S KING	RSC	S KING	RSC	S KING	RSC
SK8	RSC4	W11F2	W27B2	W11D2	F11D2	F13D2	F13D2	W26A2	W26A2	W26A2	MW3D1	MW3D1	CP	CP
SK9	SSE	W11G2	MW3C1	F9D2	F9D2	F13E2	F13E2	M26B1	M26B1	M26B1	MW3E1	MW3E1	CP	CP
SK10	RSC5	W12C2	W12E2	W13B2	W13B2	F12G2	F12G2	M28F1	M28F1	M28F1	CP	CP	Recovery Day	Recovery Day
SK11	WNW	W12D2	W13A2	W13C2	W13C2	F12H2	F12H2	M28G1	M28G1	M28G1	CP	CP	Recovery Day	Recovery Day
SK12		HEA 1	HEA 2	HEA 3	HEA 3	HEA 4	HEA 4	HEA 5	HEA 5	HEA 5	HEA 6	HEA 6	HEA 7	HEA 7
SK13	RSC6	W4A2	W6A2	W7A2	W7A2	M18E1	M18E1	M19B1	M19B1	M19B1	Recovery Day	Recovery Day	CP	CP
SK14	WNW	W4B2	W6B2	F6A2	F6A2	M19A1	M19A1	M19C1	M19C1	M19C1	Recovery Day	Recovery Day	CP	CP

WEEK Eight														
	Monday		Tuesday		Wednesday		Thursday		Friday		Saturday		Sunday	
	S KING	RSC	S KING	RSC	S KING	RSC	S KING	RSC	S KING	RSC	S KING	RSC	S KING	RSC
SK8	RSC4	W11B1	W11F1	W11F1	W27B1	F10C1	F10C1	F12J1	F12J1	F12J1	W26A1	W26A1	CP	CP
SK9	SSE	W11C1	W11G1	W11G1	Recovery Day	F10D1	F10D1	F13A1	F13A1	F13A1	Recovery Day	Recovery Day	CP	CP
SK10	RSC5	W12A1	W12C1	W12C1	W12E1	W13B1	W13B1	F12C1	F12C1	F12C1	CP	CP	F28A1	F28A1
SK11	WNW	W12B1	W12D1	W12D1	W13A1	W13C1	W13C1	F12D1	F12D1	F12D1	CP	CP	F28B1	F28B1
SK12		HEA 1	HEA 2	HEA 3	HEA 3	HEA 4	HEA 4	HEA 5	HEA 5	HEA 5	HEA 6	HEA 6	HEA 7	HEA 7
SK13	RSC6	W2A1	W4A1	W6A1	W6A1	W7A1	W7A1	F21C1	F21C1	F21C1	M16A2	M16A2	CP	CP
SK14	WNW	W3A1	W4B1	W6B1	W6B1	F35A1	F35A1	M21A2	M21A2	M21A2	M16B2	M16B2	CP	CP

WEEK Nine														
	Monday		Tuesday		Wednesday		Thursday		Friday		Saturday		Sunday	
	S KING	RSC	S KING	RSC	S KING	RSC	S KING	RSC	S KING	RSC	S KING	RSC	S KING	RSC
SK8	RSC4	FW3A1	W11B2	W11B2	W11F2	W11F2	W27B2	W27B2	F10G1	F10G1	F13B1	F13B1	CP	CP
SK9	SSE	Recovery Day	W11C2	W11C2	W11G2	W11G2	MW3A2	MW3A2	F11C1	F11C1	F13C1	F13C1	CP	CP
SK10	RSC5	M13A2	W12A2	W12A2	W12C2	W12C2	W12E2	W12E2	W13B2	W13B2	CP	CP	F12E1	F12E1
SK11	WNW	M28A2	W12B2	W12B2	W12D2	W12D2	W13A2	W13A2	W13C2	W13C2	CP	CP	F12F1	F12F1
SK12		HEA 1	HEA 2	HEA 3	HEA 3	HEA 4	HEA 4	HEA 5	HEA 5	HEA 5	HEA 6	HEA 6	HEA 7	HEA 7
SK13	RSC6	M19D2	W2A2	W2A2	W4A2	W4A2	W6A2	W6A2	W7A2	W7A2	M16C2	M16C2	CP	CP
SK14	WNW	M19E2	W3A2	W3A2	W4B2	W4B2	W6B2	W6B2	F35B1	F35B1	M16D2	M16D2	CP	CP

East North-East Locality - 14 Week Mechanical Sweeping Block Schedule

Updated 15.08.11

Code W = Weekly F = 3 weekly M = 6 weekly X* = 12 weekly *(sweep on alternate cycle)

Colour Code **ENE Block** **SSE Block** **WNW Block**

WEEK Ten														
	Monday		Tuesday		Wednesday		Thursday		Friday		Saturday		Sunday	
	S KING	RSC	S KING	RSC	S KING	RSC	S KING	RSC	S KING	RSC	S KING	RSC	S KING	RSC
SK10	RSC5	F28C1	Recovery Day	W26A1	W12A1	W12A1	W12C1	W12C1	W12E1	W12E1	CP	CP	W13B1	W13B1
SK11	WNW	F28D1	Recovery Day	W12B1	W12B1	W12D1	W12D1	W13A1	W13A1	CP	CP	CP	W13C1	W13C1
SK12		HEA 1	HEA 2	HEA 3	HEA 3	HEA 4	HEA 4	HEA 5	HEA 5	HEA 6	HEA 6	HEA 6	HEA 7	HEA 7
SK13	RSC6	M16E2	M19F2	W2A1	W2A1	W4A1	W4A1	W6A1	W6A1	W7A1	W7A1	W7A1	CP	CP
SK14	WNW	M16F2	M20A2	W3A 1	W3A 1	W4B1	W4B1	W6B1	W6B1	F6A1	F6A1	F6A1	CP	CP

WEEK Eleven														
	Monday		Tuesday		Wednesday		Thursday		Friday		Saturday		Sunday	
	S KING	RSC	S KING	RSC	S KING	RSC	S KING	RSC	S KING	RSC	S KING	RSC	S KING	RSC
SK8	RSC4	F13D1	W26A1	W26A1	M27B2	M27B2	W11B2	W11B2	W11F2	W11F2	W27B2	W27B2	CP	CP
SK9	SSE	F13E1	M26E2	M27C2	M27C2	W11C2	W11C2	W11G2	W11G2	MMW3F2	MMW3F2	MMW3F2	CP	CP
SK10	RSC5	F12G1	M28D2	M28D2	M28B2	M28B2	W12A2	W12A2	W12C2	W12C2	CP	CP	W12E2	W12E2
SK11	WNW	F12H1	M28E2	M28E2	M28C2	M28C2	W12B2	W12B2	W12D2	W12D2	CP	CP	W13A2	W13A2
SK12		HEA 1	HEA 2	HEA 3	HEA 3	HEA 4	HEA 4	HEA 5	HEA 5	HEA 6	HEA 6	HEA 6	HEA 7	HEA 7
SK13	RSC6	M16G2	M16J2	M16J2	M20B2	M20B2	W2A2	W2A2	W4A2	W4A2	W6A2	W6A2	CP	CP
SK14	WNW	M16H2	M16K2	M16K2	M20C2	M20C2	W3A2	W3A2	W4B2	W4B2	W6B2	W6B2	CP	CP

WEEK Twelve														
	Monday		Tuesday		Wednesday		Thursday		Friday		Saturday		Sunday	
	S KING	RSC	S KING	RSC	S KING	RSC	S KING	RSC	S KING	RSC	S KING	RSC	S KING	RSC
SK8	RSC4	F10C2	F12J2	F12J2	W26A2	W26A2	FW3A2	FW3A2	W11B1	W11B1	W11F1	W11F1	CP	CP
SK9	SSE	F10D2	F13A2	F13A2	M26B2	M26B2	Recovery Day	Recovery Day	W11C1	W11C1	W11G1	W11G1	CP	CP
SK10	RSC5	W13B2	F12C2	F12C2	F28A2	F28A2	Recovery Day	Recovery Day	W12A1	W12A1	CP	CP	W12C1	W12C1
SK11	WNW	W13C2	F12D2	F12D2	F28B2	F28B2	Recovery Day	Recovery Day	W12B1	W12B1	CP	CP	W12D1	W12D1
SK12		HEA 1	HEA 2	HEA 2	HEA 3	HEA 3	HEA 4	HEA 4	HEA 5	HEA 5	HEA 6	HEA 6	HEA 7	HEA 7
SK13	RSC6	W7A2	F21C2	F21C2	M16L2	M16L2	M20D2	M20D2	W2A1	W2A1	W4A1	W4A1	CP	CP
SK14	WNW	F35A2	M21A2	M21A2	M16M2	M16M2	M21B2	M21B2	W3A1	W3A1	W4B1	W4B1	CP	CP

East North-East Locality - 14 Week Mechanical Sweeping Block Schedule

Updated 15.08.11

Code W = Weekly F = 3 weekly M = 6 weekly X* = 12 weekly *(sweep on alternate cycle)

Colour Code **ENE Block** **SSE Block** **WNW Block**

		WEEK Thirteen													
		Monday		Tuesday		Wednesday		Thursday		Friday		Saturday		Sunday	
		S KING	RSC	S KING	RSC	S KING	RSC	S KING	RSC	S KING	RSC	S KING	RSC	S KING	RSC
SK8	RSC4	W27B1	W27B1	F10G2	F10G2	F13B2	F13B2	W26A1	W26A1	M27F2	M27F2	W11B2	W11B2	W11B2	W11B2
SK9	SSE	M27B2	M27B2	F10B2	F10B2	F13C2	F13C2	M26F2	M26F2	M27G2	M27G2	W11C 2	W11C 2	W11C 2	W11C 2
SK10	RSC5	W12E1	W12E1	W13B1	W13B1	F12E2	F12E2	F28C2	F28C2	M28H2	M28H2	CP	CP	W12A2	W12A2
SK11	WNW	W13A1	W13A1	W13C1	W13C1	F12F2	F12F2	F28D2	F28D2	M28J2	M28J2	CP	CP	W12B2	W12B2
SK12		HEA 1	HEA 1	HEA 2	HEA 2	HEA 3	HEA 3	HEA 4	HEA 4	HEA 5	HEA 5	HEA 6	HEA 6	HEA 7	HEA 7
SK13	RSC6	W6A1	W6A1	W7A1	W7A1	M18A2	M18A2	M18C2	M18C2	M21C2	M21C2	W2A2	W2A2	CP	CP
SK14	WNW	W6B1	W6B1	F35B2	F35B2	M18B2	M18B2	M18D2	M18D2	Recovery Day	Recovery Day	W3A2	W3A2	CP	CP

		WEEK Fourteen													
		Monday		Tuesday		Wednesday		Thursday		Friday		Saturday		Sunday	
		S KING	RSC	S KING	RSC	S KING	RSC	S KING	RSC	S KING	RSC	S KING	RSC	S KING	RSC
SK2	ENE	W8C2	W8C2	M17H2	M17H2	M22B2	M22B2	F8A2	F8A2	M6A2	M6A2	CP	CP	Recovery Day	Recovery Day
SK8	RSC4	W11F2	W11F2	W27B2	W27B2	F11D2	F11D2	F13D2	F13D2	W26A2	W26A2	MW3D2	MW3D2	CP	CP
SK9	SSE	W11G2	W11G2	MW3C2	MW3C2	F9D2	F9D2	F13E2	F13E2	M26B2	M26B2	MW3E2	MW3E2	CP	CP
SK10	RSC5	W12C2	W12C2	W12E2	W12E2	W13B2	W13B2	F12G2	F12G2	M28F2	M28F2	CP	CP	Recovery Day	Recovery Day
SK11	WNW	W12D2	W12D2	W13A2	W13A2	W13C2	W13C2	F12H2	F12H2	M28G2	M28G2	CP	CP	Recovery Day	Recovery Day
SK12		HEA 1	HEA 1	HEA 2	HEA 2	HEA 3	HEA 3	HEA 4	HEA 4	HEA 5	HEA 5	HEA 6	HEA 6	HEA 7	HEA 7
SK13	RSC6	W4A2	W4A2	W6A2	W6A2	W7A2	W7A2	M18E2	M18E2	M19B2	M19B2	Recovery Day	Recovery Day	CP	CP
SK14	WNW	W4B2	W4B2	W6B2	W6B2	F6A2	F6A2	M19A2	M19A2	M19C2	M19C2	Recovery Day	Recovery Day	CP	CP

This page is intentionally left blank

Types of issues we currently tackle and how

Littering – there is a zero tolerance policy across the city. Where an officer witnesses littering, the perpetrator is offered a fixed penalty notice in order to discharge their liability for prosecution. If the FPN is not paid, a case for prosecution is prepared. The team can accept statements from other Council and Police colleagues and members of the public.

Dog Fouling – again there is a zero tolerance city wide policy. Where an officer witnesses a dog fouling and its owner not clearing the mess up, the owner is offered a fixed penalty notice to discharge their liability for prosecution. If the FPN is not paid, a case for prosecution is prepared. Again statements can be taken from Council and Police colleagues and members of the public .

Flytipping

Reports of flytipping are investigated. Where there is evidence of who flytipped the waste, further action is taken with a view to prosecution. The land owner has legal responsibility for clearing the waste. A Legal Notice can be served to facilitate this where it is not done with an informal request. Landowners can be prosecuted for non compliance and in addition the Council can clear private land and recharge the owner.

Waste in Gardens

These complaints are addressed by writing to the occupiers, giving them 7 days to clear the waste. A further letter is sent if the waste is not cleared in this time frame giving another 7 days. If the waste remains after this time a Legal Notice is then served giving the occupier 28 days to remove it. If it remains after the Notice has expired, a fixed penalty notice is served. If the FPN is not paid a prosecution case is prepared. The Council also has the option of carrying out the works in default and recharging the occupier of the premises.

Please note that for ALMO properties the first 2 letters are sent by the ALMO, and it is referred to us if the waste remains after the time limit on the second letter for Notice to be served.

Also depending on the type of waste (eg, food waste, noxious matter), other Notices are available to be used to expedite the process.

Domestic and Commercial Waste Issues

Commercial entities require a waste contract, or evidence that they have legally disposed of their waste. A 'producer' Notice can be served on businesses to prove they have either a waste contract, or receipts to demonstrate their waste has been legally disposed of. If the 'producer' is not complied with, an FPN is issued. Where the FPN is not paid, a prosecution case is prepared.

We also have powers to serve a legal Notice requiring a business to obtain a commercial waste contract.

Illegal advertising

Where the perpetrator of illegal advertising can be identified, a legal Notice is served. Further incidents may then result in prosecution. Where the perpetrator cannot be identified staff remove the signs.

Highways Obstructions (e.g., overhanging vegetation)

Where a complaint is received relating to vegetation obstructing the highway. Letters are sent to the complainant and to the alleged perpetrator. The complainant is asked to get back in touch after 14 days if the problem is not resolved, as the alleged perp is asked to cut the vegetation back if it is obstruction the highway in this timescale. Sending the letter initially saves officer time visiting as we receive high volumes of complaints relating to overhanging vegetation. If the complainant calls back, an Officer visits and assesses if there is an obstruction. A further letter is sent giving 14 days. If this request is not complied with a Notice is served. After 28 days if the Notice has not been complied with the works are carried out in default and the owner is re-charged.

Drainage

Much of the drainage work currently undertaken is scheduled to move to Yorkshire Water. We will still be involved in issues relating to drains (ie the pipe which serves only one property). We have legal powers to serve Legal Notices, carry out works in default and recharge the owners.

Other Nuisance

We also investigate other nuisance issues, including light, smoke, filthy & verminous premises, empty and derelict properties etc.

Street Trading Consent Scheme

The team will work with Highways and Markets in relation to the above scheme. Investigating complaints about existing traders or possible illegal trading activity.

Dog Warden Service

The dog wardens deal with issues such as strays, dangerous dogs, and dog fouling, as well as enforcing the laws relating to the Dog Control Orders in Leeds.

Full Policies for dealing with the above matters are available on request.

Outer West - Team Activity 1.4.11 – 30.6.2011

- Service Requests Received 220 being non noise related

The main areas of work have been related to the issues below:

1. 45 Drainage
2. 33 Waste in gardens
3. 33 Over grown hedge
4. 21 Flytipping
5. 15 Nuisance
6. 11 Rodents

Ward	EAT's and H&EET service requests	Notices served
Pudsey	71	10
Farnley & Wortley	110	13
Calverley & Farsley	39	11

A number of areas were cleaned up with the aim of probation.

Planning work undertaken with police on Pudsey town area to look at highway obstruction and littering.

This page is intentionally left blank